

WATER





Panorama E² supervises
the Vitrolles treatment plant



Managing water resources is one of the world's major challenges; it is vital to provide the quantity and quality expected by everyone involved in water management. Codra has extensive knowledge in water management based on over 25 years' experience and expertise with Panorama solutions.

Multi-site, multi-function hypervision to unite your applications

Producing drinking water; processing wastewater, rain-water, and sludge; managing drinking water and sanitation networks... With Panorama Suite, you no longer need a plethora of dedicated systems: all these applications remain accessible through a unified solution.

Vendor-independent

Panorama E² provides methods based on industry stand-

ards and norms, enabling communications with a wide range of products.

Wastewater treatment plants and drinking water production centers

Site security requires reliable industrial solutions. Panorama Suite offers one of the market's best ROIs. The supervision of your plants covers all production and purification phases, including biological and physical/chemical treatment, filtering, screening, coagulation, sedimentation, ozone refining, and chlorination. Determining the size of a project, moving to the development phase, adapting the application according to changes in the field while guaranteeing a long-term, high-quality solution: our Panorama offering is ideal for managing drinking water production and wastewater treatment. It provides the technical features, reliability, open design, and flexible architecture required to meet all your constraints.

Data collection and distribution, commu- nication front-end

Panorama COM supports a wide range of standard protocols.

Panorama COM is a communication front-end particularly well-suited to sporadic transmissions and intermittent links. It enables fully transparent telemetry of your remote infrastructure, irrespective of the medium, for accurately controlling and governing your equipment (Sofrel, Wit, Ijinus, Perax, Schneider, etc.) and technologies (ADSL, GPRS, PSTN, etc.). Panorama COM manages redundant communications equipment.

Consumption control and leak detection

One of the key challenges facing our generation is the control of our water usage. Panorama HISTORIAN meets your requirements by providing indicators, reports, yield and consumption tracking for operations and leak detection.

Alert management

The alert and personnel scheduling management module provides intuitive, visual ergonomics for you to accurately organize your teams. Panorama E² functions manage distribution of alert messages over various channels including email, voice messages, text messages, and fax.

A wide range of installations

Panorama Suite is the right solution for your facilities whether they are simple (such as a valve, or a level or pH sensor), small (with just a few variables), large (>50k variables/region), or critical (drinking water or industrial wastewater).

Used by thousands of clients

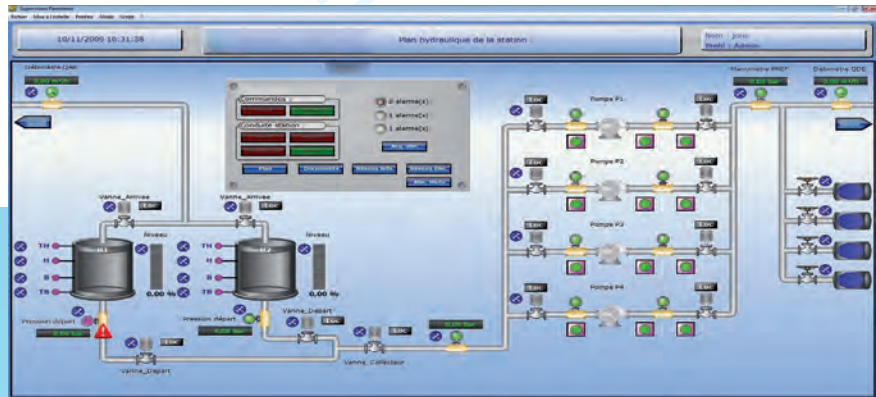
Local authorities, industry, distribution networks, semi-public organizations... We continually enhance Panorama functions and services based on customer feedback in order to adapt to market demand.



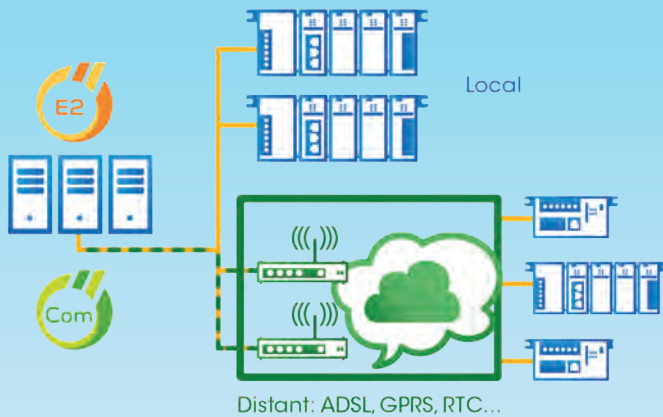
Industrial effluent
treatment plants



Algérienne de l'eau



Local and remote management of your equipment with Panorama E² and TLM

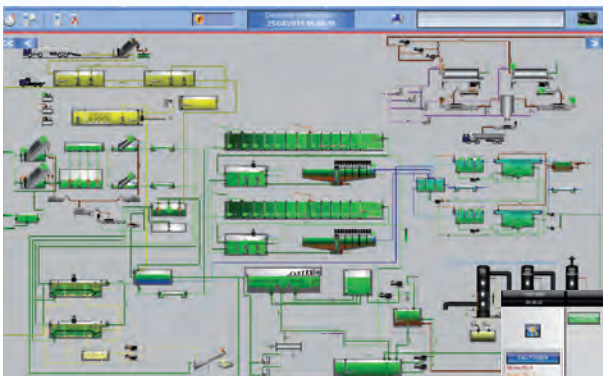


Simple configuration: reuse your custom development via copy/paste

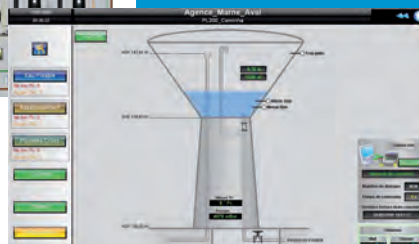
Panorama Suite is configured and maintained using a single interactive tool capable of automatically importing configuration from remote devices, enabling instant generation of most of your SCADA application.

You can use Panorama Suite to manage anything from large infrastructures to small applications where development times must be minimized. You simply copy/paste the code you developed previously, thus greatly improving development lead times and results.

Société des Eaux de Marseille



Veolia Seine et Marne Nord



Panorama Suite offers all the functions required to manage and control your facilities :

- Data acquisition, alarms, data history,
- Process mimics, trend drawings, scheduling,
- Telemetry, remote access, management of communication media,
- Alerts, on-call management,
- Integration of CCTV, access control, intrusion protection,
- Reports for improved plant administration,
- Native SNMP support for network and system management,
- Redundancy, load balancing.

Powerful, automatic tools for application creation and maintenance.

Implementation of unlimited system architectures, from stand-alone workstations to multi-server systems with multi-level redundancy..

Seamless integration with your enterprise information system :

- Linkage to your user directory,
- Computer center operation on a virtual machine,
- Connection with centralized databases.

Remote access via mobile devices (tablets, smartphones, HTML5 based web clients) or via desktop PCs.





Panorama at the Telemetry Center of the Société des Eaux de Marseille. Permanent remote overseeing of over 850 hydraulic plants, real-time collection and treatment of almost 95,000 data points.

References

SIAAP

Service public de l'assainissement francilien



Water distribution and sanitation / Waterpipe networks - Cities, Local authorities, Public service organizations

AGUR (Aquitaine Urban and Rural Management) • Grand Lyon • Ibadan Nigeria • IECBW (Brabant Wallon Intercommunal Water Center) • Paris Town Hall • Metropolitan Nantes • Nice Metropole • Algérienne de l'eau • Société des Eaux de Marseille • SIEAMD (Montluçon-Désertines Intercommunal Water and Sanitation Union) • SAUR • SIAHVV (Intercommunal Union for Water Development in the Yvette Valley) • SIAVB (Bièvre Valley Intercommunal Sanitation Union) • SIVOA (Mixed Union of the Lower Orge Valley) • STGS • Mixed Union for Action on Flooding of the Orne Valley and its catchment area • Veolia Eau Seine et Marne Nord

STEP : Production of Drinking water / treatment of water / wastewater

SIAAP • SIEAMD (Montluçon-Désertines Intercommunal Water and Sanitation Union) • Société des Eaux de Marseille • STEP : Arles - Aubusson - Buchelay - Blois - Clermont-Ferrand - Chauvé - Dammarie-les-Lys - Ensues-La-Redonne - Florange - Fos-sur-Mer - Fraize - Itteville - Metropolitan Lille - Locquirec - Loudéac - Meaux - Migennes - Montbard - Montluçon - Pommerit-le-Vicomte - Rethel - Saint-Cyr-sur-Mer - Saint-Fons - Saint-Martin la Garenne - Sivry Courty - Strasbourg Regional Municipality - Vars

Industrial water

Atomic Energy Commission: CEA Bruyères le Châtel - Cadarache - Saclay - Valduc • EDF Flamanville • Disneyland Paris • Hôtel de la Cité • Lambert Dodard Chancereul • Nicolas Feuillatte • Lille Stadium • Orangina • Yoplait

CODRA

Codra Software Limited

Hérons Way - Chester Business Park - Chester - CH4 9QR - UK

Tel : + 44 (0)1244 893221

E-Mail : sales-panorama@codra.fr - codra.net

The information in this document is provided for information only and is not binding. Codra reserves the right to change the document at any time without warning.

All brands are the property of their respective owners.

Royalty license : J-M Huron Eaux de Marseille / Labs Electronic / Veolia Eau © 2013-2018