

# SAFETY & SECURITY







Panorama E<sup>2</sup> is used to ensure the safety of 50,000 spectators at the Lille Stadium



Panorama Suite provides a broad range of solutions you can adapt to your risk control requirements: the safety of people and equipment, prevention technologies, surveillance, control, recording, assistance in supervising interventions, etc.

To operate your plant under optimal conditions, you need consistency between systems. Panorama Suite is widely used to supervise operations and access information both from command centers and locally, on fixed or mobile terminals.

#### Multi-site, multi-function hypervision to unite your applications

Panorama Suite provides a unified view of your information and helps you put your data in perspective. It can manage your communications, produce the information required to make key decisions, and improve interaction throughout your business (between operations, security, recovery, maintenance, etc.). You no longer need dedicated systems: all your activities share a unified access.

#### Vendor-independent

Since Panorama E<sup>2</sup> is based on industry standards and norms, it can communicate with a wide range of products. You remain independent from any particular technology.

#### Real-time information

Panorama Suite displays all data in real time for you to detect and react immediately when required. Data is acquired, processed if necessary, and then displayed directly on operator consoles for a fast, effective response to events.

#### Cross-tabulating data: Decision support

Technical security infrastructure includes heterogeneous devices organized in redundant sub-systems. This often makes it quite difficult to make decisions during a crisis. The Panorama software platform is located right in the heart of the action. By cross-checking information with other sources

and equipment, Panorama provides operators with information they can understand in order to ensure the safety of people and equipment, and call in specialized teams when required.

#### Analyze, improve, and assess your performance

If a crisis occurs, you can subsequently analyze the information recorded by Panorama to optimize your risk control strategy and future interventions. It can avoid untimely alarms by providing detailed information to responders. Panorama can also help you improve your procedures and decide when to update or replace your equipment. Use the dashboards provided by Panorama HISTORIAN, a standalone solution for collecting, archiving and analyzing installation's data, to evaluate the performance of your plant and equipment and make your security policy more effective.

#### Applications

Panorama is used for all types of activities : defense, all facilities open to the public (infrastructure, ports, airports, hospitals, stations, exhibition sites, sports facilities, tourist and recreational equipment, government offices, banks, universities, hotels, restaurant chains, cities and communities, small shops, shopping centers, chain stores, etc.), transportation (both central and local workstations, desktop and mobile systems), buildings, prisons, and industrial sites.

#### Control and supervision

Panorama centralize information from all types of sensors for video surveillance, access control, intrusion protection, patrol supervision, detection, fire alarm follow-up, device geolocation, remote control of lighting, etc.



Reading, editing, and creating time ranges is intuitive with Panorama



## Video

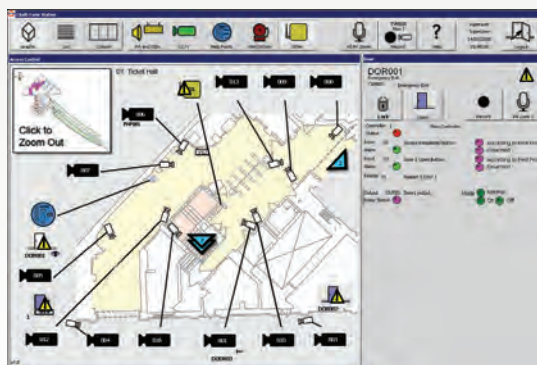
Panorama is compatible with most equipment available on the market. It manages video just like any other SCADA function. The solution provides a consistent set of tools and information to help you leverage video information (for counting people, stamping products, detecting incidents, etc.).

Panorama works seamlessly with leading video systems such as Axis, Genetec, Milestone and OnSSI.

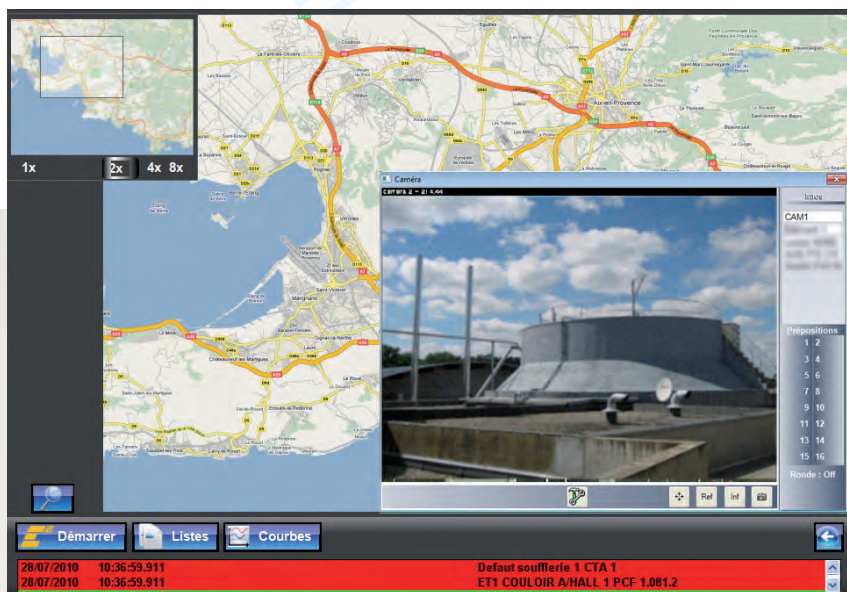
## On-call features

Team management is a key to success, and our customers greatly appreciate Panorama's rigor and its ease of use in this area. Panorama provides an intuitive interface for reading, editing, and creating time ranges, as well as for integrating new responders.

London Underground



Monitoring of Fire & Gas  
detection and emergency shutdown safety systems



Panorama Suite offers all the functions required to manage and control your facilities :

- > Integration of CCTV, access control, intrusion protection,
- > On-call functions and schedules,
- > Data acquisition and data history,
- > Alarms and events,
- > Reports for improved plant administration,
- > Native SNMP support for network and system management.

Implementation of unlimited system architectures, from stand-alone workstations to multi-server systems with multi-level redundancy.

Flexible, reliable architecture/seamless integration with your information system :

- > Links to your user directory,
- > From stand-alone workstations to multi-server systems with multi-level redundancy,
- > Computer center operation on a virtual machine,
- > Connection with centralized databases.

Remote access via mobile devices (tablets, smartphones, HTML5 based web clients) or via desktop PCs.



Fire alarms



Intrusion protection



Access rights





Panorama provides a wide range of solutions that you can adapt to your risk control requirements.

Supervise operations and access information both from Command Centers and locally (on fixed or mobile terminals).

## References

**AIRFRANCE**
**Atos**

**Kidde  
Fire Systems**

**PSA PEUGEOT CITROËN**


### Defense

DGA • French Airbase • FREMM • Charles de Gaulle aircraft carrier • CEA Laser Mégajoule • Australian Navy • Korean Navy • Chilean Navy • French Navy • Naval Group

Facilities open to the public: Infrastructure, hospitals, sports facilities, tourist and recreational equipment, government offices, banks, universities, hotels, communities, shopping centers, etc.

Atos • Angers Hospital • Meaux Hospital • R. Poincaré Hospital • Vendôme Hospital • General Council 92 • Hôtel Plaza • Broca Hospital • Fleury Mérologis Prison • PSA • Sheraton Roissy • Sevelnord • Société Générale • Snecma • Thyssen Krupp • Ville de Xian China •

### Transportation

Air France • CIGT 06 • DGAC • London Underground • RATP • RER • RTM • Nice Tramway • Clermont-Ferrand Tramway •

### Monitoring of industrial sites

ANDRA • CEA Bruyères le Chatel / Cesta / Grenoble / Marcoule / Valduc • DOMPE Pharma • EDF •

**CODRA**

Codra Software Limited  
Adamson House, Towers Business Park,  
Wilmslow Road, Didsbury - Manchester M20 2YY - UK  
Tel : +44 (0)161 9554200  
E-Mail : sales-panorama@codra.fr - codra.net

The information in this document is provided for information only and is not binding. Codra reserves the right to change the document at any time without warning. All brands are the property of their respective owners.

Royalty license : ELISA / Valode & Pistre Architectes / Atelier Ferret Architectures / Max Lerouge - Telent - Dani Ramos on Unsplash © 2020