

Panorama Suite



The backbone of your
Industrial information System

Digital platform



CODRA

Key elements of what we offer

Collect, centralize, model, use and analyze your data to improve your operational performance.

- **A software platform** dedicated to the challenges of Digital Transformation: intelligent buildings, smart cities, industry of the future.
- **The Panorama Suite** comprises three standalone, combinable and complementary software programs.
- **A single configuration workshop** to design all your Panorama applications .
- **For many years, cybersecurity, has been the technical pillar** of the Panorama Suite.
- **Open design** so that third-party additions can be easily integrated into your Panorama applications.
- **Modular architecture** to adapt resources to best suit your requirements.



Real-time SCADA to control your plant and equipment !

Giving you peace of mind to operate your assets

Panorama E2 is the ideal SCADA platform for building powerful, secure applications. It is suitable for use in any area of activity that relies on SCADA/HMI or hypervision for production control and monitoring. Equipment, technical facilities and infrastructures can really benefit from the real power that Panorama E2 brings.

Panorama E2 is developed solely using object principles and comes as standard with many ready-to-use features. Its openness means you can enhance its capabilities with your own business-specific developments.

Acquisition	Human-Machine Interface	Object oriented technology	Alarms	Diagnostic	Real Time
Cybersecurity	Telemetry	standard applications	Automate	Multilingual	Virtualization
MES & Reporting	Mobility	Remote control	CCTV	Critical applications	

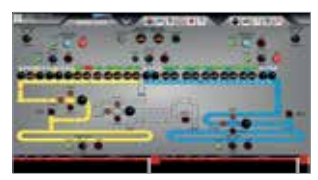


Download the Mobile application for Android & iOS

SCADA

OPERATION

PROCESS

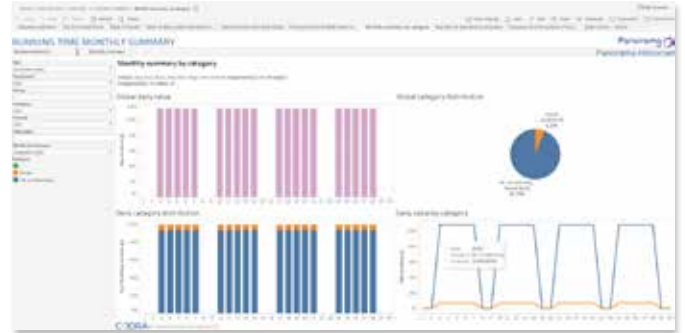


Collect history data and analyze your performance!

Transform data into valuable indicators

Panorama H2 is a standalone solution for collecting, archiving and analyzing all or part of an installation's data. Once the data has been collected from all kinds of sources (including PLCs, DCS, Panorama SCADA), Panorama HISTORIAN processes it directly in its database, performs calculations, and makes light work of report creating and publishing.

All users have access to data recorded by Panorama HISTORIAN (Production, Maintenance, Quality, Energy, Management, etc.) to analyze the performance levels of your installation using the performance indicators you have defined.



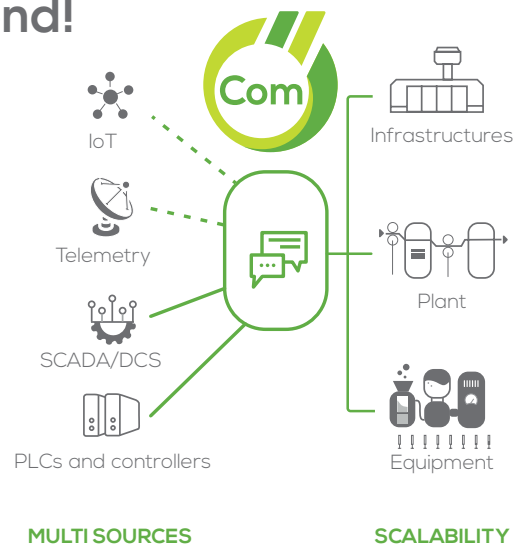
Intelligent communication front-end!

Managing a mix of protocols and communications equipment

Panorama COM is a standalone communication front-end that supports a mix of real-time and telemetry data acquisition protocols.

Panorama COM is more than just a communications gateway. It controls your communications devices in order to connect to remote equipment.

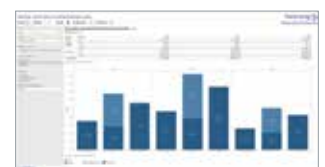
Transparency and simplicity are the core concepts. Panorama COM standardizes information originating from diverse protocols and makes them available to your customer's systems.



SAFETY/SECURITY

PERFORMANCE MONITORING

ANALYTICS



Codra is here to support you

Codra can provide support in the areas of design, audit and deployment of Panorama applications to help its customers and partners reach all of their project goals.

Experts, engineers and technicians are on hand to offer guidance on all aspects of Panorama :

Ahead of the project

- to define and approve its architecture and principles,
- to define the most effective methodologies for configuring an application.

During the project

- to advise on progress, definition and validation, as well as planning the next stages,
- to participate in the deployment and/or commissioning phases on site,
- to provide high quality telephone support and technical expertise.













After the project

- to conduct application audits,
- to guide application porting or up-scaling.

Codra can provide you with an assistance and support program tailored to your needs no matter whether you are an end-user, integrator or OEM.

"When you deal with Codra, you deal with the manufacturer"

Activity sectors

-  Energy
-  BMS-FM
-  Environment
-  Transportation
-  Water
-  Hypervision
-  Aeronautics
-  Industry
-  Telemetry
-  Oil & Gas
-  Food
-  Medical / Pharma

References

ACCORHOTELS ARENA • ADP ORLY / ROISSY • CHARLEROI / BÂLE-MULHOUSE /
BLAGNAC / CASABLANCA / LOS ANGELES AIRPORTS • AGIP • AIR FRANCE • AIRBUS
GROUP • ALSTOM • ANDRA • ARCELOR MITTAL • ARCONIC • ASCOMETAL • ATOS •
BANQUE DE FRANCE • BASF • BOMBARDIER • BOULEVARD PERIPHERIQUE DE PARIS
• BRIDGESTONE • CARREFOUR • CARRIER • CASINO BARRIERE • CEA • CIMENTS
CALCIA • CNR • COLAS RAIL • CRAM • DALKIA • DANONE • DASSAULT AVIATION
• DATA CENTER ORANGE • DGAC • DHL • EDF • EURALIS • EUROTUNNEL • GASCO
• GDF • GENERAL ELECTRIC • IRSN • JOHN DEERE • JOHNSON CONTROLS
• KRAFT JACOBS SUCHARD • LA POSTE • LA REDOUTE • LEVI'S • BORDEAUX
CITY HALL • LISBON UNDERGROUND • LONDON UNDERGROUND • MOET ET
CHANDON • NAVAL GROUP • NESTLE • NICOLAS FEUILLATTE • PERRIER VITTEL •
PHILIPS • POMPIERS DE PARIS • LE HAVRE HARBOUR • PSA • RATP • RENAULT •
RTBF • RTE • RTM • SADE • SAFRAN • SAINT GOBAIN • SANOFI • SAUTER • SEM
• SIAAP • SIEMENS • SMART FRANCE • SNCF • SOCIETE GENERALE • SONY • ST
MICROELECTRONICS • BORDEAUX / LILLE / LYON STADIUMS • STAPLES • SUEZ
ENVIRONNEMENT • SYCTOM • THALES • THOMSON • THYSSEN KRUPP • TOTAL •
UNIROYAL • VALEO • VEOLIA EAU • VINCI MOTORWAYS • VNF • YOPLAIT

CODRA

Adamson House
Towers Business Park
Wilmslow Road, Didsbury
Manchester M20 2YY - UK
Tel. : +44 (0)161 9554200
E-Mail : sales-panorama@codra.fr
Codra.net

The information in this document is provided for information only and is not binding. Codra reserves the right to change the document at any time without warning.

All brands are the property of their respective owners.

© Codra 2020 - Photo credits : Desya / Eiffage Energie / Meta Productigie / Labs Electronic / Richez Associes & Paul Andreu architecte Paris / Liraat Visuals & Nema Studio.

