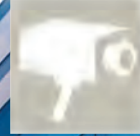


BMS & FM





Panorama E² installed
in La Défense near Paris



Facilities Management (FM) and Building Management Systems (BMS) involve an increasing number of items to process and supervise. Real-time visualization of this data must be intuitive to ensure efficient daily use. Codra has extensive knowledge of FM/BMS based on 25 years' experience and expertise with Panorama solutions.

Multi-site, multi-function hypervision to unite your applications

Panorama E² provides unified access to all your applications: air conditioning, heating, CCTV, intrusion protection, access control, ticket machines, consumption management (water, electricity, gas), technical equipment management (PLC cabinets, electrical power, etc.), fire detection, lighting, messaging (highways, tunnels, traffic information, etc.).

Vendor-independent

Panorama E² implements methods based on industry standards and norms, thereby enabling communications with a wide range of products.

Application protocols

Interfaces with LON, KNX, DALI, Modbus, etc. and native BACnet integration. BACnet uses network discovery to configure network objects;

you can also use EDE to import device configuration files. Panorama manages all BACnet services and includes ready-to-use supervision objects: you can create an operational application in just a few clicks.

Alert systems

New standard Panorama E² functions manage distribution of alert messages over various channels including email, voice messages, text messages, and fax.

On-call management

The scheduling and personnel management module provides intuitive, visual ergonomics to accurately organize your teams.

Energy efficiency

One of the key challenges facing our generation is the control of our energy usage. Whether for a single building or for a property complex, Panorama HISTORIAN is the

answer to the needs of indicators, reports and other operating and maintenance dashboards of the Facility Manager.

A wide range of installations

Panorama Suite is the ideal solution for your facilities, whether they are simple (video protection), small (100 variables), large (>50k variables), or critical (datacenters, defense).

Used by thousands of clients

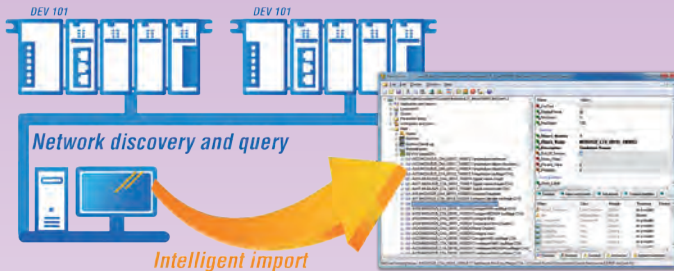
Stadiums, museums, parking garages, datacenters, subway lines, buildings, head offices, shopping centers, warehouses, distributed sites... In order to adapt to market demand, we continually enhance Panorama functions and services based on customer feedback.



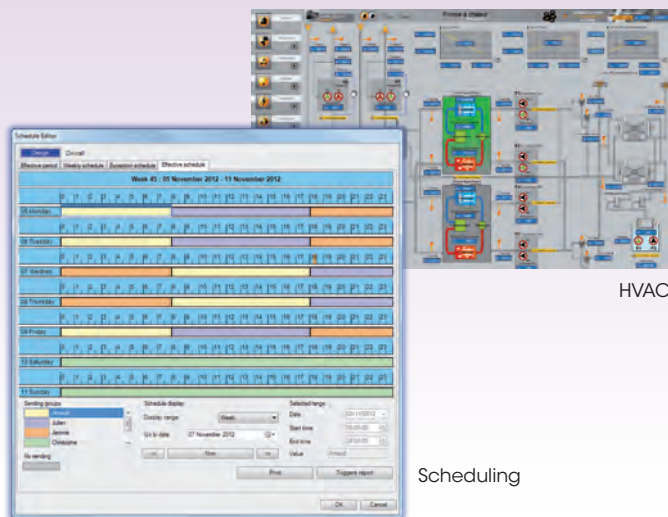
Panorama E²: a universal tool for combining and integrating your FM/BMS applications



Intuitive configuration with BACnet :
greatly lowers your development
and maintenance costs



Panorama creates fully-operational functions ranging from data acquisition to alarm management, scheduling, and even mimics, by combining the discovery of your plant components with our automatic SCADA generation mechanism.



HVAC

Scheduling



Panorama Suite offers all the functions required to manage and control your facilities :

- › Data acquisition, alarms, data history,
- › Mimics, trend drawings, scheduling,
- › Alerts, and on-call management,
- › Integration of CCTV, access control, intrusion protection,
- › Reports for improved plant administration,
- › Native SNMP support for network and system management,
- › Redundancy, load balancing.

Powerful, automatic tools for application creation and maintenance.

Implementation of unlimited system architectures, from stand-alone workstations to multi-server systems with multi-level redundancy.

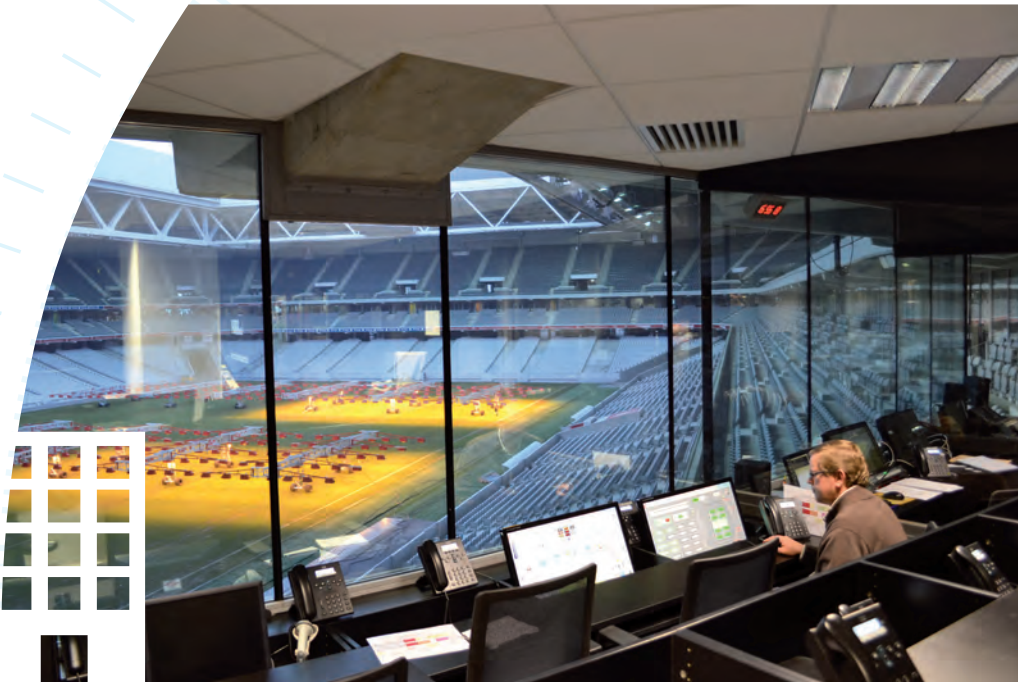
Seamless integration with your enterprise information system :

- › Link to your user directory,
- › Computer center running on a virtual machine,
- › Connections with centralized databases.

Remote access via mobile devices (tablets, smartphones, HTML5 based web clients) or via desktop PCs.

breeam





Panorama at the
Lille Stadium control center

References

Culture / Entertainment / Tourism : AccordHotels Arena • Rome Auditorium • Lyon Library • Barrière Casino • Hotel Cité-Concorde - Plaza - Sheraton • Arab World Institute • Center Parcs • France Television • Maison de Radio France • Louvre Museum • Sydney Opera • Palais de Tokyo • ICEO Calais / Molitor Swimming Pool • RTBF Belgique • Bordeaux / Lille / Lyon Stadium • Montrouge Theater

Datacenters : Atos • Betfair • Mobistar • Orange

Energy / Environment : Carrier • CEA • CRAM • EDF • ENGIE • Suez Environnement

Retail : Carrefour • Decathlon • Hyper U • Ikea • JPG • Leclerc • Manutan • Staples USA

Industry : Bridgestone • Goodyear • Kimo • LBC • Merck • Moët & Chandon • Papeterie de Bègles • PSA • Sanofi • Snecma • Tarkett • Thyssen Krupp • Turbomeca • Valeo

Health : IRE (National Institute of Radioelements) • Orsay Protontherapy Center • University Hospitals of Amiens - Angers - Belfort - Bordeaux - Chalon-sur-Saône - Chambéry - Chinon - Clermont-Ferrand - Dijon - Lille - Meaux - Montbéliard - Paris - Périgueux - Saint-Brieuc - Valenciennes

Corporate headquarters and branch offices : Alstom transport • Atos • Banque de France • Bank of England • Casino • CIC Crédit Mutuel • ETDE • Société Générale • Aérospatiale • Infogrammes • Le Parisien

National / Regional government organizations : Assemblée Nationale • CAF de Lyon • Caisse des dépôts et consignation • Regional municipality of Bordeaux • General Councils of several French departments (54-59-89-92) • DCN • DGA • Ecole des Mines • Fleury Mérois Penitentiary • La Poste • Bordeaux City Hall- Montpellier • Colmar • Dijon • Rouen • Parking garages of Monaco - Belfort - Dijon - Montbéliard • European Parliament • Paris Fire Dept. • Syctom • UFR de Pau • University of Orleans - Toronto

Transportation : Airports of Basel-Mulhouse - Toulouse-Blagnac - Lille-Lesquin - Los Angeles - Paris - Charleroi • Air France • APRR • Angers Tramway Warehouse • Subway systems in Paris - London - Marseille - Lisbon • RER • SNCF



CODRA