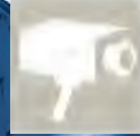


TRANSPORTATION





Panorama E² installed
on the Bordeaux tramway



Supervision is crucial for all types of transportation from roads, tunnels, buses, subways, rail and tram lines to air, sea, and river navigation. Safety, reliability, reduced energy consumption, and increased fluidity (speed of intervention, etc.) are the major challenges requiring global data analysis and instant forwarding of information for operators to make optimal decisions in real time.

Travel and transportation

Industrial technology must address the demands of mobility both in cities and along trunk lines. Public and personal transportation depend on resources that must be used wisely in order to increase efficiency. Transportation professionals want to receive real-time information on availability, traffic, travel time, geolocation of staff, etc. in order to remain competitive by providing regular, reliable service.

Multi-site, multi-function hypervision unites your applications

Ensure the safety of people and property, deliver reliable solutions, provide information to help decision-makers, maximize interactions between operations, security, emergency, and maintenance teams... With Panorama Suite, all your applications remain accessible through a unified solution.

Vendor-independent

Panorama E² provides methods based on industry standards and norms, enabling communications with a wide range of products.

Safety

The control and supervision of operations using reliable information is a major concern for both operators and authorities, and they are vital for significantly reducing the number and the severity of accidents. By analyzing the data, clients can take preventive and corrective measures. Supervision plays

an important part in fast action: video, ventilation, physical/chemical measures, variable-legend traffic signs, barriers, etc.

Availability and reliability

Reliability is one of Panorama's key features, and it is greatly appreciated by users. Panorama is an open, secure, and unified tool with design features such as redundancy, load distribution, back-up, and DBMS, ideally suited to the transportation industry. Panorama's availability makes it a reliable solution for daily use.

Plan with confidence

Panorama E² integrates data from other information systems (weather, traffic, video, geolocation, etc.). You can integrate all types of information in your processes: load forecasts, equipment availability, inventory management, team schedules, Computerized Maintenance Management Systems, and custom tools.

Leverage all available information

If intervention is required, Panorama E² centralizes all the information you need in real-time, providing a powerful data concentrator for decision support.

Improve performance through analysis

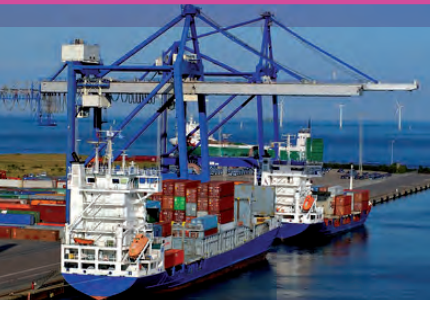
Panorama HISTORIAN, a standalone solution for collecting, archiving and analysing your data, interfaces with your process visualisation system, provides calculations, displays and reports specific to your needs in order to maximize your production, to optimize the use of your equipment and to improve safety.

Used by thousands of clients

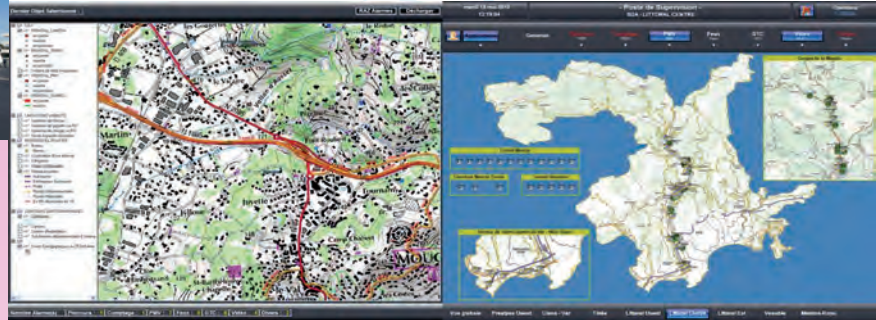
Public transportation, air transport, waterways, road and rail networks, tramways, subways... We continually enhance Panorama functions and services based on customer feedback in order to adapt to market demand.



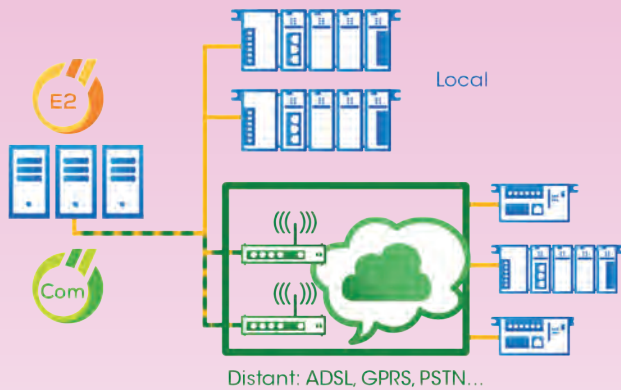
Tunnels, tollbooths, parking garages...



Sea and air travel
Roissy Charles de Gaulle Airport



Local and remote management of your equipment with Panorama E² and COM



Simple configuration: reuse your custom development via copy/paste

Panorama Suite offers an intuitive tool for automatically importing the configuration of remote devices in order to instantly generate most of your SCADA application.

You can use Panorama to manage anything from large infrastructures to small applications where development time must be minimized. Simply copy/paste your previously developed code: this greatly improves intervention times and quality.

Panorama Suite offers all the functions required to manage and control your facilities :

- > Data acquisition, alarms, data history,
- > Mimics, trend drawings, scheduling,
- > Telemetry, remote access, management of communication media,
- > Alerts, on-call management,
- > Integration of CCTV, access control, intrusion protection,
- > Reports for improved plant administration,
- > Native SNMP support for network and system management,
- > Redundancy, load balancing.

Powerful, automatic tools for application creation and maintenance.

Implementation of unlimited system architectures, from stand-alone workstations to multi-server systems with multi-level redundancy.

Seamless integration with your enterprise information system :

- > Linkage to your user directory,
- > Computer center running on a virtual machine,
- > Connection with centralized databases.

Remote access via mobile devices (tablets, smartphones, HTML5 based web clients) or via desktop PCs.

Alpes-Maritimes Traffic
Information and
Management Center



Cofiroute motorway management

Clermont-Ferrand
tramway



Panorama at the Nice Tramway Control Center.

The Optical Control Panel controlled by Panorama E² informs operators on the line status.

References



Aviation

ADP • Airbus • Air France • Airports : Basel-Mulhouse - Birmingham - Charleroi - Dubai - Dublin - Gatwick - Heathrow - London - Manchester - Mohamed V Casablanca - Nice - Los Angeles - Toulouse • DGAC • Liebherr • Safran Turbomeca • Snecma • Thales

Rail

Alstom Transport • Lisbon subway - London underground - Barcelona subway • Network Rail • RATP (Paris) • Régie des Transports de Marseille • SNCF • Korean bullet train • Tramways of Bordeaux - Clermont-Ferrand - Dijon - Issy-les-Moulineaux - Nice - Orleans - Paris T1 - T2 - T3

Highways

Autoroute FM • Cofiroute • SAPRR • CIGT 06 (Traffic Information Center - Alpes-Maritimes region) • DDE 93 - 78 • Trans Val de Marne • Vinci

Parking garages

Belfort - Monaco - Dijon - Montbéliard • Lille Stadium

Tunnels

Paris Ring road • Parc des Princes • Porte de Pantin • "Chat" Mountain Tunnel • Jacky Lynch Tunnel • Landy A1 Hindhead Tunnel • London Hatfield Tunnel • Monaco Tunnel

River and maritime

Service Maritime de Boulogne-sur-Mer • Service Maritime de Calais • VNF • Port autonome du Havre • Port de Monaco

CODRA

Codra Software Limited
Adamson House, Towers Business Park,
Wilmslow Road, Didsbury - Manchester M20 2YY - UK
Tel : +44 (0)161 9554200
E-Mail : sales-panorama@codra.fr - codra.net

The information in this document is provided for information only and is not binding. Codra reserves the right to change the document at any time without warning.
All brands are the property of their respective owners.
Royalty license : Cigt / Cofiroute / St2n © 2020