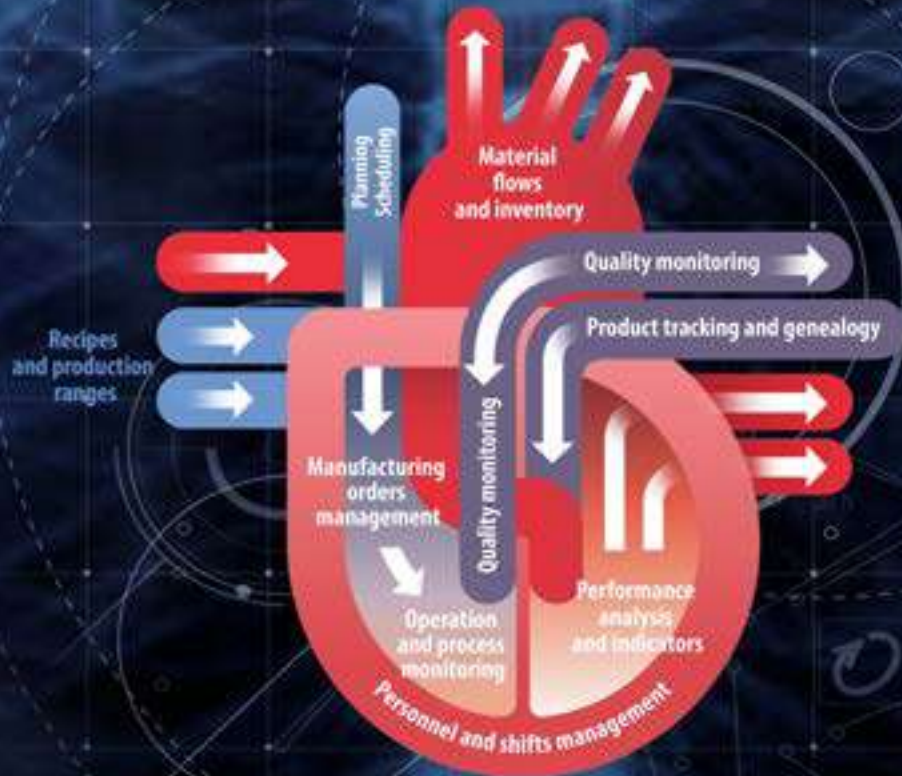


# COOX

## Origin

### The Heart of the Smart Factory



Control your production in real time at the heart of your industrial site thanks to the MES COOX platform and MESbox modules. Advanced and proven solution, quick to set up, COOX allows you to optimize your industrial operations, improve your production and reduce your costs!



# CODRA

## The key points:

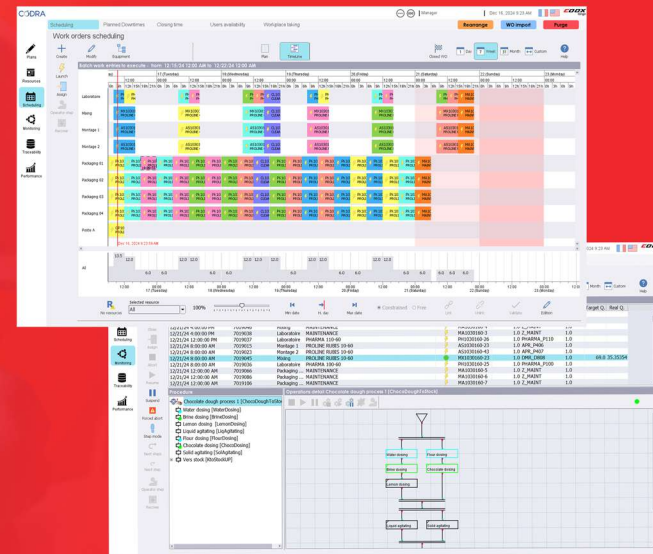
- Integrated and modular offer, scalable according to your needs
- Perfect adaptation to any manual or automated process by modeling
- Systematic traceability of any operation or material transfer
- Easy to set up and secure web architecture
- From individual machine to complete plant and multi-site deployment

## COLlaborative Operations & eXecution

### In perfect complementarity with your ERP

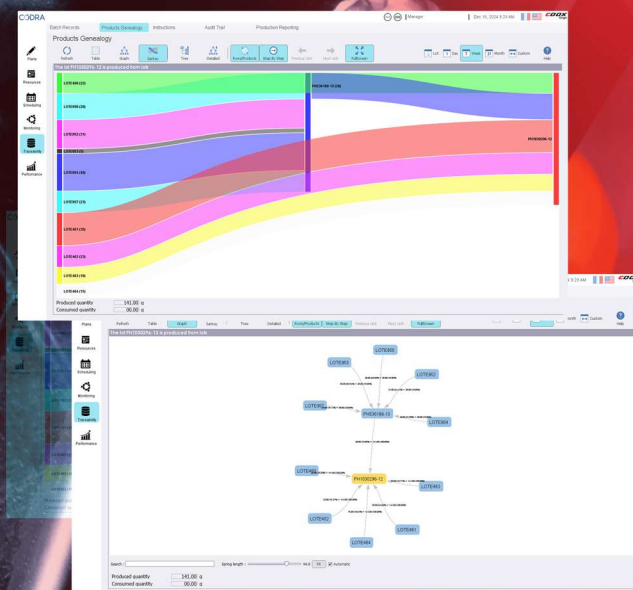
COOX offers complete visibility on the production planning updated by your ERP. In the event of unforeseen events or delays, you can reorganize production orders and work orders in real time (preventive maintenance, checks, cleaning, etc.) by simply dragging and dropping. COOX takes into account the production capacities, the required manpower and the dependencies between the different tasks.

COOX supports all range, BOM or recipe structures for the manufacture of products from your ERP or PLM. You can monitor the progress of production orders in real time, both globally and for each specific step. An electronic batch record of each production is produced automatically and provided to the ERP. COOX's internal object model complies with the ISA-95 standard, facilitating exchanges with any third-party software that has open exchange modes.



### Impeccable process and product traceability

COOX registers for you each work order and all its operations, with their instructions and results. Automatic and manual operations are traced identically, creating a complete electronic file for each batch of production. COOX tracks batches of materials and components through container and transfer modeling. You obtain in real time the ascending and descending genealogy of the batches, which you can examine in the form of a graph with a textual search on all the characteristics or in the form of a flow of material.



### Maximize the performance of your industrial plant

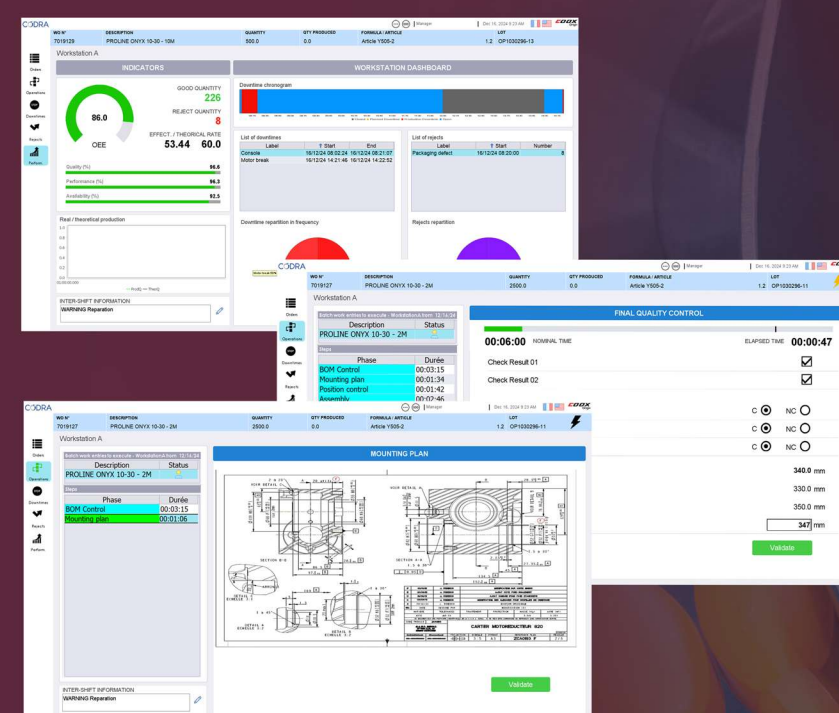
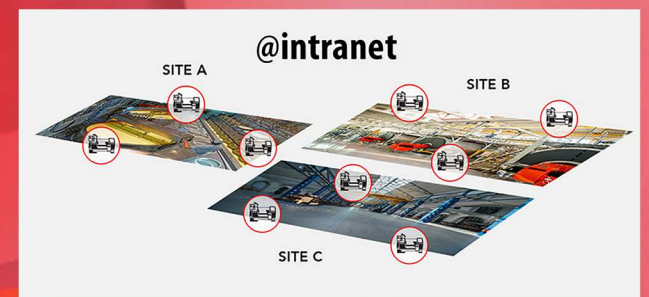
COOX collects and consolidates in real time standard indicators (KPI) such as OEE, TEEP, MTBF, MTTR, etc. and measures your productivity over different time periods (team, day, week, month, custom). Downtime and rejects, classified into categories and sub-categories, can be recorded automatically from the PLCs or entered manually. Thanks to the customizable dashboards, composed from a library of numerous graphs (Pareto, breakdown into sectors, gauges with thresholds, etc.), you analyse your performance according to the most relevant criteria.



### Modelization: an asset for single and multi-site applications

COOX stands out in the MES market thanks to a unique model technology that makes it possible to model installations and operations. It takes into account various processes (continuous, batch, manufacturing or discrete) and different levels of automation with a single standard software. Similar equipment or workstations share a reusable model, thus reducing the time to deploy the solution on the same site or several sites.

A "core model" approach can be set up with a library of models where only the relevant models for each site are implemented. COOX models are multilingual and each user can access the application in their own language, including non-Western languages.



### Interfaces designed for operators

All standard business components of MESbox modules are customizable (function keys, character size, column width, etc.) and operators benefit from control panels adapted to each manufacturing step, quality controls, declarations of downtimes or rejects, as well as to any other type of operation.

# COOX Origin

CODRA

## MESbox modules: a coherent modular offer

MESbox modules, based on the COOX platform, offer ready-to-use and customizable functionalities for an integrated and coherent solution. Depending on your budget, you can prioritize the modules that will allow you to obtain a rapid return on investment. The gains obtained can be used to finance the deployment of other functions. The modular approach also allows you to ensure effective change management within your teams.



PMT

### Production/Quality Management & Traceability

Production management, quality controls and traceability. Real-time monitoring of production and batch records.



IPS

### Improved Planning & Scheduling

Scheduling of productions and orders works (production, maintenance, quality).



LBM

### Labor Management

Workforce management. Assessment of production human resources.



COOX Platform

Data collection and historization  
ISA-95 Services



QPI

### Quality & Performance Indicators

Quality and performance indicators: OEE-TEEP-MTBF-MTTR, availability, efficiency, quality rate. Analysis of the causes of stops and rejects.



MTG

### Material Tracking & Genealogy

Monitoring of material flows and genealogy. Management of workshop stocks, location of materials and components.



SCADA

### SCADA

Supervision - Recording of real-time measurements and curves. Event and alarm management.



Thanks to our network of certified integrator partners in France and abroad, we guarantee you business skills, availability and proximity.

Distributed by:  
**CODRA**

Immeuble Hélios  
2 rue Christophe Colomb  
91300 Massy  
[www.codra.net](http://www.codra.net)

*The information in this document is given for information only and is not contractual. ORDINAL Software reserves the right to modify it at any time without notice. All the brands mentioned are registered by their respective owners.*

